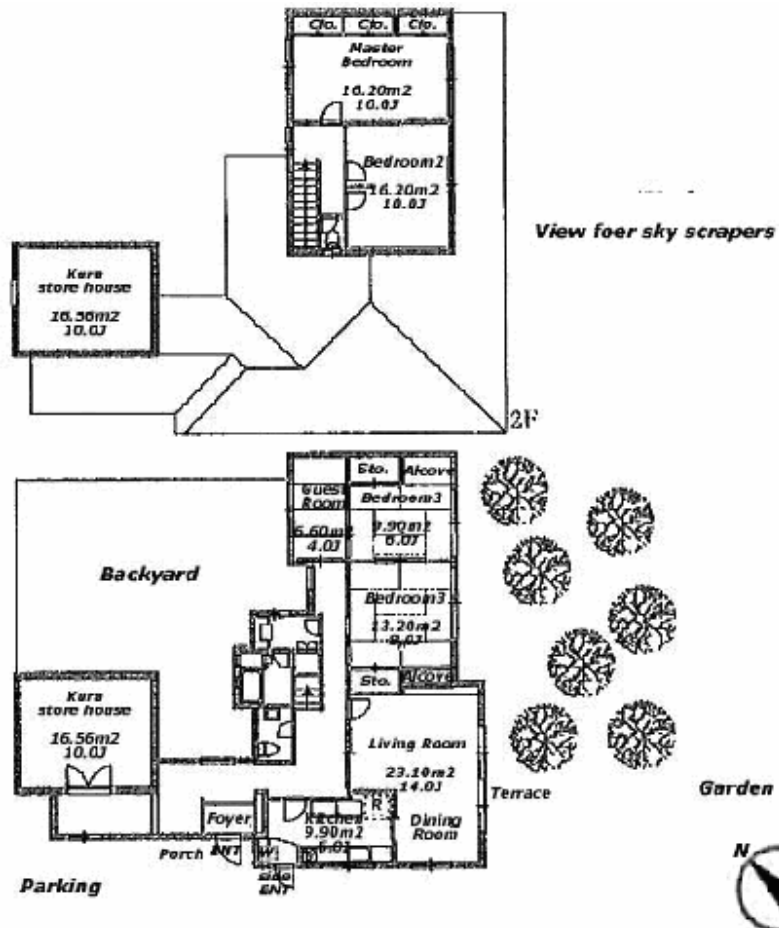


<b>Name</b>	<b>Kurassic House</b>	<b>Type:</b>	<b>Rm:</b>
<b>Location</b>	5-15-8 Higashi Nakano Nakano-ku Tokyo		
<b>Rent (per month)</b>	¥700,000		
<b>Deposit</b>	4months rent	<b>Key money :</b>	<b>Renewal Fee</b>
<b>Floor Type</b>	4Bedrooms +Guest Room + storahouse + Large garden with 1 & 1/2 Bathroom(s)		
<b>Parking</b>	1 Car included in rent / ¥25,000for extra Car		
<b>Floor area</b>	154.53m <sup>2</sup> /1663.34Sqf /46.74tsubo		
<b>Transportation 1</b>	5 min. walk to Higashi Nakano stn on JR Chuo/JR Sobu line		
<b>Transportation 2</b>			
<b>Transportation 3</b>	6 min. walk to Ochiai stn on Tozai line		
<b>School Information</b>			
<b>Available</b>	Early Aug	<b>Completion</b> 1975/8	<b>Pet</b> Negotiable

ID:



**Appliances** Refrigerator Washing machine Dryer Dishwasher Oven

**Facilities** A/C (individual) F/Heating

**Internet** FTTH

**Comment** House with traditional Janese 2 story storehouse "Kura"  
 Land area 554.18sq.m., 2.4km from Yayoimachi Ichu-ME Ligne 4-2 bus for Lycee  
 Fully renovated with new kitchen, bath, e.t.c. in July 2017